

## THE POWER OF EXTRA REACH

- Slotted Boom • Higher Capacity Winch • Rope Compensation

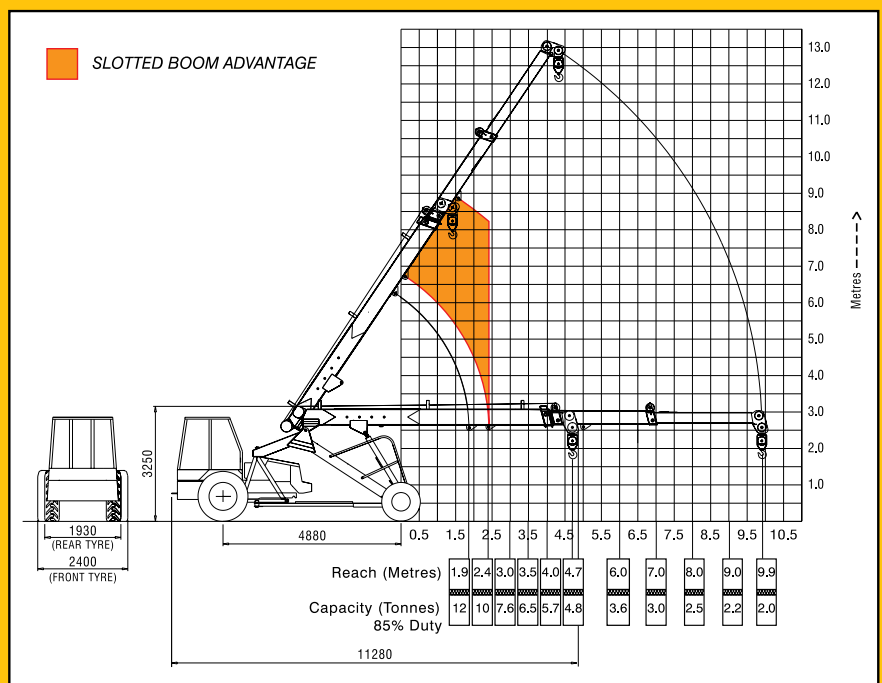


HYDRA 12

# Pick 'n' Carry Crane Hydra-12 with Slotted Boom

## SALIENT FEATURES :

- Longer 3 Part hydraulically telescoping slotted boom with travelling hook for better out reach and higher lift duties.
- Self compensating snatch block for auto leveling of loads.
- New Technology Control Valve for Precision Handling.
- Heavy duty winch motor for heavier lift duties.
- Articulated chassis for short turning radius.



## Specifications :

Engine	
Make & Model	Simpson S-433 Four Cylinder, Water Cooled Diesel Engine Rated power for crane 49 BHP @ 2200 RPM (Max continuous engine rating 59 HP @ 2300 RPM) or equivalent Engine
Transmission	
Type	Heavy duty transmission developed especially for crane application. Sliding Mesh, spur teeth gearbox. Six forward and two reverse speeds with high and low selector lever
Speed	Travel Speed 25 Km/h - restricted as per safety norms (without load)
Clutch	Single plate, heavy duty dry friction type clutch plate especially designed for crane application
Steering	
Type	Articulated power steering, hydraulically controlled through 2 double acting jacks
Articulation	upto 56°
Turning Radius	6.5m
Operational Timings (no load at rated engine RPM)	
Steering (lock to lock)	6-10 secs
Boom Raising	23-28 secs
Boom Lowering	19-24 secs
Telescoping Extension in	9-11 secs
Telescoping Extension out	14-16 secs
Hoist Line Speed	53m/min. max. (Single line)
Brakes	
Front Wheel	Pneumatically assisted hydraulic brakes
Rear Wheel	Mechanical shoe brakes actuated through a slave cylinder
Parking	Mechanically actuated at rear wheels
Track	
Front	1930mm (center of twin wheels)
Rear	1570mm (center of wheels)

Tyres		
Front	11.00x20-16PR (Four Nos.)	
Rear	13.00x24-12PR (Two Nos.)	
Boom		
Telescoping Derricking	Three part box type hydraulically operated, synchronised through double acting jacks.	
Hoist Mechanism		
Hoist	Four falls, Hydraulic 10T winch capacity. Rope dia 13mm	
Hydraulic System		
Pump	Pin Vane Type Hydraulic pump.	
Control Valve	4 spool control valve with built in pressure relief valve for precision handling	
Hydraulic Filter	Suction line has a 100 mesh inline strainer while return line has 25micron full flow filter	
Electrical System		
Type	12V Single battery, Negative earth	
Capacities		
Fuel Tank	45 Ltrs.	
Hydraulic Tank	90 Ltrs.	
Axle Reduction	2.45 Ltrs	
Operating Weight (Kgs)	10750	
Safety System		
• Overload audio warning system	• Safety brakes on hoist	
• Hose protection failure device	• Cylinder guard for protection	
Standard Accessories		
• All weather cabin	• Front Bumper	• Reflectors
• Lift Cylinder Guard	• Rear View Mirror	• Turn & Reverse lamp
Optional Accessories		
• Fly jib 2.3m length	• Fire Extinguisher	• Spark Arrestor
• Air conditioned cabin	• Steering Wheel	• Extra hooks
• Safe load indicator with hydraulic cut off	• Six falls, (winch capacity 12T)	

## A wide national network of Business Centres and Dealers

- Ahmedabad : (079) 40063445, 9879006280 • Bangalore : (080) 23398809, 9448046310 • Bhopal : (0755) 2551955 9826824111
- Bhubaneswar : (0674) 2588775, 9937028870 • Chandigarh : (0172) 5017995, 9417603041 • Chennai : (044) 42153707-D, 9840852996
- Dehradun : (0135) 2672647, 9837755999 • Guwahati : (0361) 2733246, 9435342785 • Hyderabad : (040) 27842451, 9849992003
- Jaipur : (0141) 2760904, 9929077866 • Kanpur : 9839211591 • Kolkata : (033) 24862028-D, 9830108037 • Lucknow : (0522) 4003683, 2371901, 9839065688
- Mumbai : (022) 24218150, 9821458206 • Nagpur : (0712) 6450713, 9822224489 • New Delhi : (011) 26444821, 9871598288
- Pune : (020) 40089771, 9823068664 • Ranchi : (0651) 2531340, 9431108578 • Visakhapatnam : (0891) 25632345, 9866637270

## ESCORTS CONSTRUCTION EQUIPMENT LIMITED

Plot No: 2, Sector-13, Faridabad 121 007

Tel.: (0129) 2221481/2261323/2283073/2286694 Fax: (0129) 2264638/2261323

Website: www.ecel.com, marketing@escorts-ecel.com