

# HP 216



## ENGINE

Tata 497TC, 4 Cylinder  
Water Cooled Diesel Engine  
Rated power for crane 90 BHP @ 2800 RPM  
or equivalent engine.

## TRANSMISSION

- Type Synchronmesh transmission  
5 forward, 1 reverse speed
- Speed Travel Speed 45 Km/h with out load
- Clutch Hydraulic clutch especially designed for crane application

## STEERING

- Type Articulated power steering, through steering wheel
- Articulation 45 degree
- Turning Radius 5900 mm

## OPERATIONAL TIMINGS

(no load at rated engine RPM)

- Boom raising 18-21 secs
- Boom Lowering 13-15 secs
- Telescopic Extension  
In 11-14 secs  
Out 16-20 secs
- Hoist Line Speed 70-80 m/min, on 4th layer

## BRAKES

- Front Wheel Pneumatically assisted hydraulic brakes
- Rear Wheel Air brakes
- Parking spring loaded brake, air released

## TRACK

- Front 1840 mm (center of twin wheels)
- Rear 1910 mm (center of wheels)

## TYRES

- Front 11.00x20-16PR (Four Nos.)
- Rear 14.00x25-20PR (Two Nos.)

**AISLE WIDTH** 2440 mm

## BOOM

- Telescoping 4 part Boom, Hydraulically telescopic synchronised
- Derricking Through two nos. cylinders

## HOIST MECHANISM

- Hoist 5 falls, Hydraulic winch, with over hoist switch block with 11.5 m hook travel, safety brake on hoist, Rope dia 13 mm

## HYDRAULIC SYSTEM

- Pump Steel body high speed gear type hydraulic pump
- Control Valve 4 spool control valve with built in pressure relief valve for trouble free operation
- Hydraulic Filter Suction line has a 100 mesh inline strainer while return line has 25 microns full flow filter

## ELECTRICAL SYSTEM

- Type 12V Single battery, Negative earth

## CAPACITIES

- Fuel Tank 120 Ltrs.
- Hydraulic Tank 120Ltrs.

**OPERATING WEIGHT** 13500 Kgs.

## STANDARD ACCESSORIES

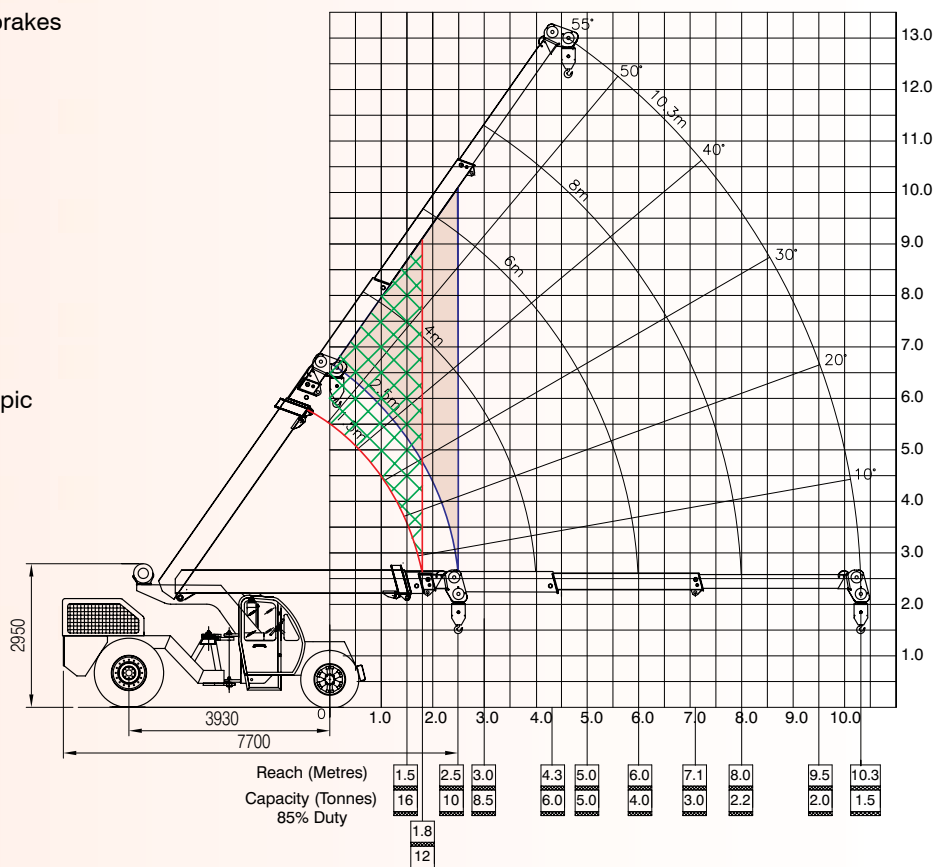
- Front mounted all weather spacious cabin
- Tools and tackle box
- Front Bumper
- Option spool for drag operation
- Cabin fan
- Reflectors
- Rear view mirror
- Turn & Reverse lamp

## OPTIONAL ACCESSORIES

- Safe load system
- Fly Jib - 2.3 m
- Fire Extinguisher
- Stereo cassette player
- Air Conditioned cabin
- Fire Extinguisher
- Spark Arrester
- Man carrying basket
- Beacon Light
- Drag winch with outriggers

## SAFETY SYSTEM

- Safety brakes on hoist
- Hose protection failure device
- Hydraulic cut off with safe load system



## A wide national network of Business Centres and Dealers

• **Ahmedabad** : (079) 26574995, 9879006280 ahmedabad@ecel.com • **Bangalore** : (080) 23398809, 9880007001 bangalore@ecel.com  
 • **Bhopal** : 9826435940 bhopal@ecel.com • **Bhubaneswar** : 9861028807 bhubaneswar@ecel.com • **Chandigarh** : (0172) 5017995, 9872975556 chandigarh@ecel.com  
 • **Chennai** : (044) 28553707, 9840852996 chennai@ecel.com • **Guwahati** : (0361) 2604901, guwahati@ecel.com • **Hyderabad** : (040) 27904058, 9849992001 hyderabad@ecel.com • **Jaipur** : (0141) 5113310, 9829277019 jaipur@ecel.com • **Kolkata** : (033) 22472830, 9830108037 kolkata@ecel.com • **Lucknow** : (0522) 2371901, 9839065688 lucknow@ecel.com • **Mumbai** : (022) 24948850, 9821458206 mumbai@ecel.com • **Nagpur** : (0712) 2546704, 9822224489 nagpur@ecel.com • **New Delhi** : (011) 26444821, 9810299584 delhi@ecel.com • **Pune** : (020) 26833115, 9823068664 pune@ecel.com • **Ranchi** : (0651) 2531340, 9431108578 ranchi@ecel.com

# ECEL

ESCORTS CONSTRUCTION EQUIPMENT LIMITED

Plot No: 2, Sector-13, Faridabad 121 007

Tel.: (0129) 2261323/2283073/2286694 Fax: (0129) 2283065/2261323

Website: www.ecel.com