

# HYDRA 10



Hydraulic Mobile Pick 'n' Carry Crane of 11.4T Capacity

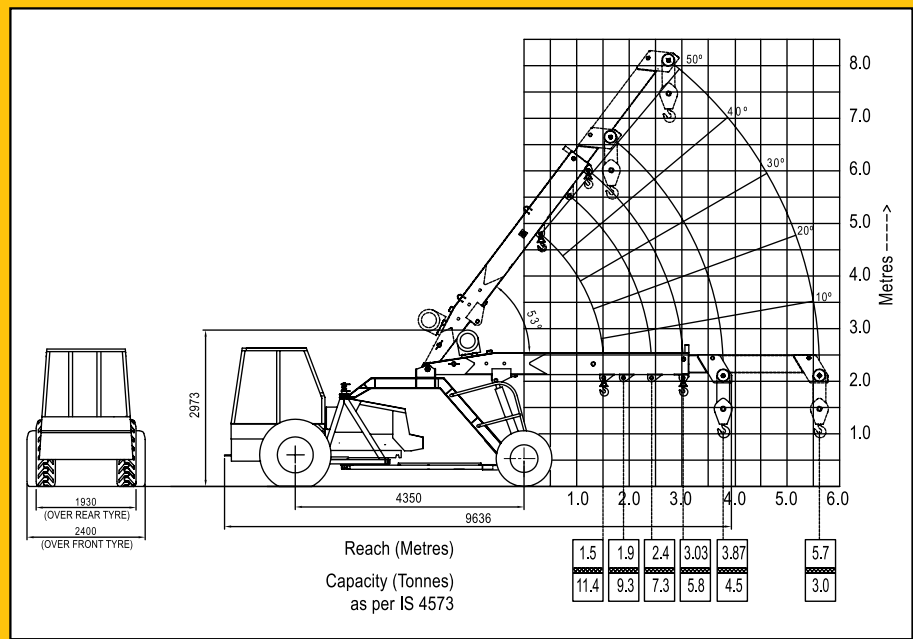
THE POWER OF LIFT



# Pick 'n' Carry Crane Hydra-10

## SALIENT FEATURES :

- 2 Part telescopic boom hydraulically extendable for more outreach and high lift.
- Specifically built long chassis for more reliability.
- Heavy duty transmission specifically designed for crane application.
- Articulated chassis for short turning radius.
- New Technology Control Valve for precision handling



## Specifications :

### Engine

**Make & Model** Simpson S-433 Four Cylinder, Water Cooled Diesel Engine  
Rated power for crane 49 BHP @ 2200 RPM  
(Max continuous engine rating 59 @ 2300 RPM)  
or equivalent Engine.

### Transmission

**Type** Heavy duty transmission developed specially for crane application  
Sliding Mesh, spur teeth gearbox. Six forward and two reverse speeds with high and low selector lever.

**Speed** Travel Speed 25 Kmph - restricted as per safety norms (without load)

**Clutch** Single plate, heavy duty dry friction type clutch plate specially designed for crane application.

### Steering

**Type** Articulated power steering, hydraulically controlled through 2 double acting jacks

**Articulation** upto 56°

**Turning Radius** Minimum 5.2 m

### Operational Timings (no load at rated engine RPM)

Steering (lock to lock)	6-10 secs
Boom Raising	18-22 secs
Boom Lowering	14-18 secs
Telescoping Extension in	7-8 secs
Telescoping Extension out	9-11 secs
Hoist Line Speed	24m/min ( Single line)

### Brakes

**Front Wheel** Pneumatically assisted hydraulic brakes

**Rear Wheel** Mechanical shoe brakes actuated through a slave cylinder

**Parking** Mechanically actuated at rear wheels

### Track

**Front** 1880 mm (center of twin wheels)

**Rear** 1570 mm (center of wheels)

### Tyres

**Front** 11.00x20-16 PR(Four Nos.)

**Rear** 13.00x24-12 PR(Two Nos.)

### Boom

**Telescoping** Heavy duty, Two-part box type hydraulically operated

**Derricking** Through double acting jacks

### Hoist Mechanism

**Hoist** Four falls, hydraulic winch. Rope dia 13 mm

### Hydraulic System

**Pump** Pin Vane Type Hydraulic pump

**Control Valve** 4 spool control valve with built in pressure relief valve for precision control

**Hydraulic Filter** Suction line has a 100 mesh inline strainer while return line has 25 micron full flow filter

### Electrical System

**Type** 12V Single battery, Negative earth

### Capacities

Fuel Tank	45 Ltrs.
Hydraulic Tank	90 Ltrs.
Axle Reduction	2.45 Ltrs.
Operating Weight (kgs)	8450

### Safety System

- Overload audio warning system
- Safety brakes on hoist
- Cylinder guard for protection
- Overhoist audio warning system
- Hose protection failure device

### Standard Accessories

- All weather cabin
- Lift cylinder guard
- Front Bumper
- Rear view mirror
- Reflectors
- Turn and Reverse lamp

### Optional Accessories

- Fly jib : 4.1m length
- Air conditioned cabin
- Safe load indicator with hydraulic cut-off
- Fire Extinguisher
- Steering wheel
- Spark Arrestor
- Extra hooks



## ESCORTS CONSTRUCTION EQUIPMENT LIMITED

Plot No: 219, Sector-58, Ballabgarh, Faridabad (Haryana) - 121 004, India

Tel.: (0129) 2306300/2306570, Fax: (0129) 2306463

E-mail: marketing@escorts-ecl.com, Website: www.ecl.com