

# HYDRA 10SB

Hydraulic Mobile Crane of 12T Capacity

## THE POWER OF EXTRA REACH

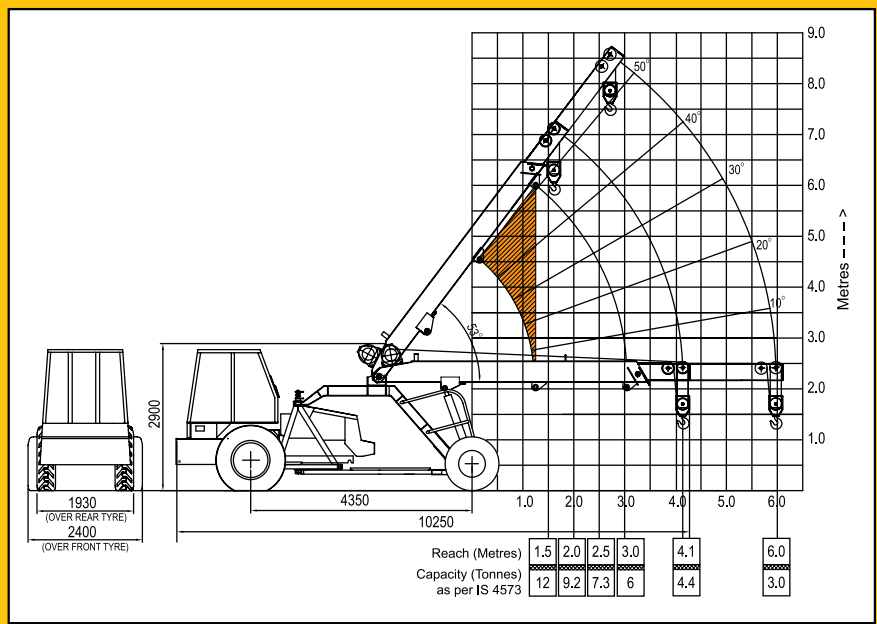
- Slotted Boom • Higher Capacity Winch • Rope Compensation
- New Technology Control Valve for Precision Handling



# Pick 'n' Carry Crane Hydra-10 with Slotted Boom

## SALIENT FEATURES :

- 2 Part hydraulically telescoping slotted boom with travelling hook for better outreaches and higher lift duties.
- Self compensating snatch block for auto leveling of loads.
- Heavy duty transmission specifically designed for crane application.
- Heavy duty winch motor with 6 fall snatch block for heavier lift duties.
- Articulated chassis for short turning radius.



## Specifications :

### Engine

**Make & Model** Simpson S-433 Four Cylinder, Water Cooled Diesel Engine  
Rated power for crane 49 BHP @ 2200 RPM  
(Max continuous engine rating 59 @ 2300 RPM)  
or equivalent Engine

### Transmission

**Type** Heavy duty transmission developed specially for crane application. Sliding Mesh, spur teeth gearbox. Six forward and two reverse speeds with high and low selector lever.

**Speed** Travel Speed 25 Kmph - restricted as per safety norms (without load)

**Clutch** Single plate, heavy duty dry friction type clutch plate specially designed for crane application

### Steering

**Type** Articulated power steering, hydraulically controlled through 2 double acting jacks

**Articulation** upto 56°

**Turning Radius** Minimum 5.2 m

### Operational Timings (no load at rated engine RPM)

Steering (lock to lock)	6-10 secs
Boom Raising	18-22 secs
Boom Lowering	14-18 secs
Telescoping Extension in	7-9 secs
Telescoping Extension out	9-11 secs
Hoist Line Speed	53m/min. max. (Single line)

### Brakes

**Front Wheel** Pneumatically assisted hydraulic brakes

**Rear Wheel** Mechanical shoe brakes actuated through a slave cylinder

**Parking** Mechanically actuated at rear wheels

### Track

**Front** 1880mm (center of twin wheels)

**Rear** 1570mm (center of wheels)

### Tyres

**Front** 11.00x20-16PR (Four Nos.)

**Rear** 13.00x24-12PR (Two Nos.)

### Boom

**Telescoping** Heavy duty, Two part box type hydraulically operated

**Derricking** Through double acting jacks.

### Hoist Mechanism

**Hoist** Six falls, hydraulic winch. (Winch capacity 10T) Rope dia 13mm

### Hydraulic System

**Pump** Pin Vane Type Hydraulic pump.

**Control Valve** 4 spool control valve with built in pressure relief valve and precision control

**Hydraulic Filter** Suction line has a 100 mesh inline strainer while return line has 25 micron full flow filter

### Electrical System

**Type** 12V Single battery, Negative earth

### Capacities

Fuel Tank	45 Ltrs.
Hydraulic Tank	90 Ltrs.
Axle Reduction	2.45 Ltrs.
Operating Weight(Kg)	8850

### Safety System

- Overload audio warning system
- Cylinder guard for protection
- Hose protection failure device
- Rope Compensation System

### Standard Accessories

- All weather cabin
- Lift Cylinder Guard
- Front Bumper
- Rear View Mirror
- Reflectors
- Turn & Reverse lamp

### Optional Accessories

- Fly jib : 4.1m length
- Air Conditioned Cabin
- Safe load indicator with hydraulic cut-off
- Fire Extinguisher
- Steering Wheel
- Spark Arrestor
- Extra hooks



## ESCORTS CONSTRUCTION EQUIPMENT LIMITED

Plot No: 219, Sector-58, Ballabgarh, Faridabad (Haryana) - 121 004, India

Tel.: (0129) 2306300/2306570, Fax: (0129) 2306463

E-mail: marketing@escorts-ecl.com, Website: www.ecl.com